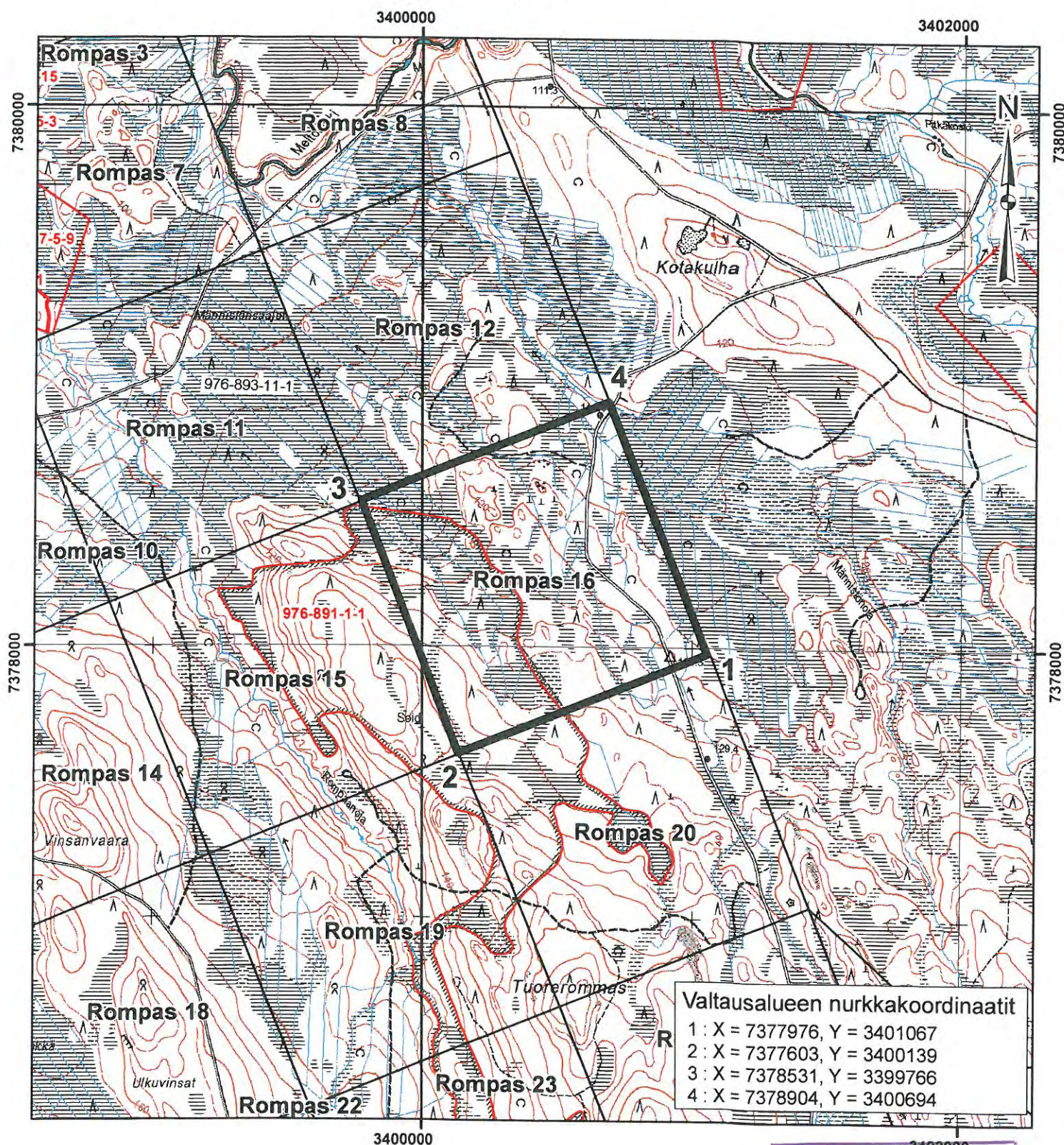


Rompas 16



Valtausalueen nurkkakoordinaatit

1 : X = 7377976, Y = 3401067

2 : X = 7377603, Y = 3400139

3 : X = 7378531, Y = 3399766

4 : X = 7378904, Y = 3400694




Rompas 16

Pinta-ala : 100 ha

Liite 2 valtaushakemukseen

Rompas (1 - 46)

15.10.2009

-  Valtausalue
-  Muut_valtausalueet
-  Tilan_raja

0 0,5 1 Kilometri

1 : 20 000

Karttaprojektio : KKJ3

TEM

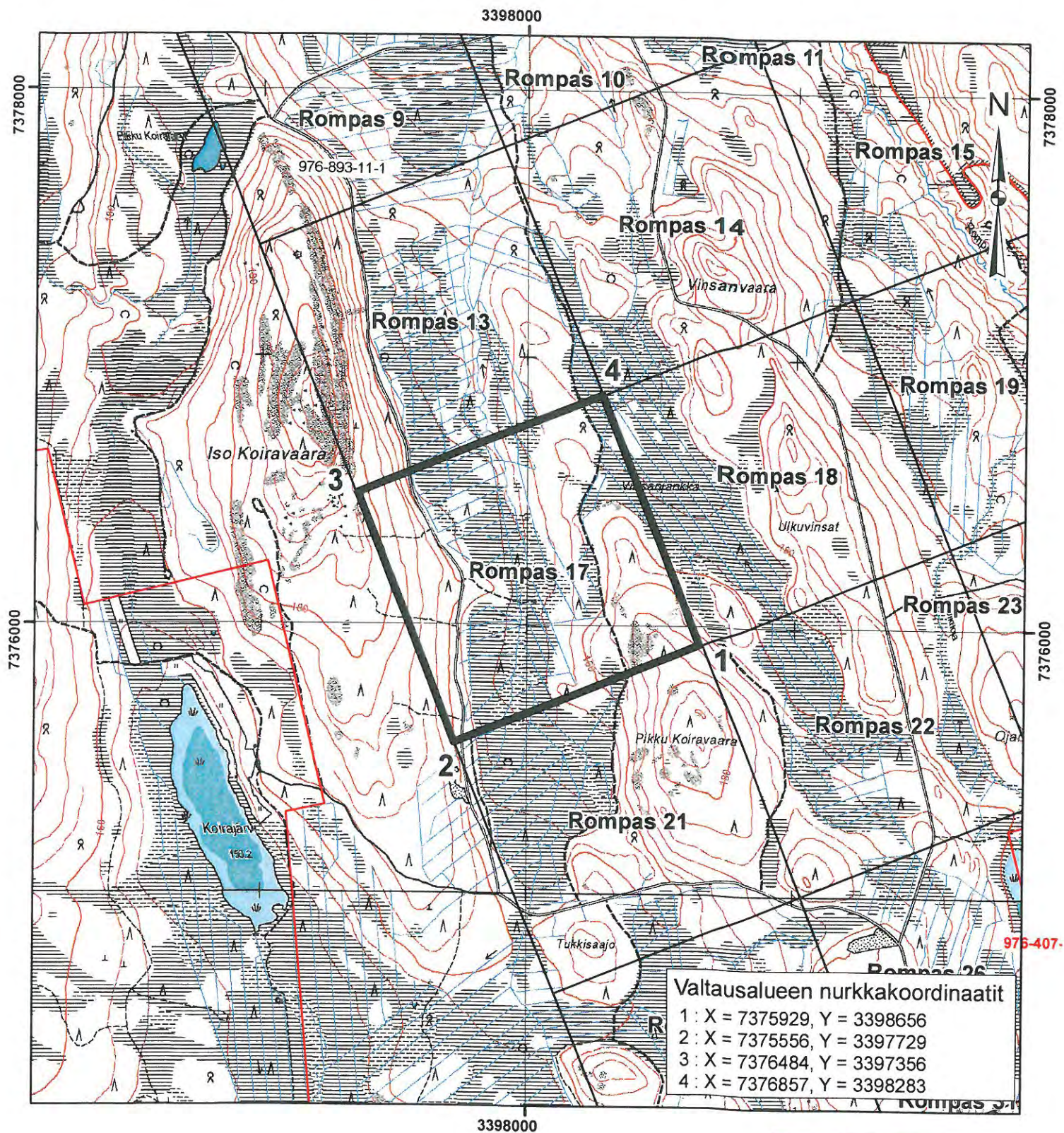
15. 10. 2009


AREVA

AREVA Resources Finland Oy

08.10.2009

Rompas 17



Rompas 17

Pinta-ala : 100 ha

Liite 2 valtaushakemukseen




Rompas (1 - 46)

15.10.2009

0 0,5 1 Kilometri

1 : 20 000

Karttaprojektio : KKJ3

-  Valtausalue
-  Muut_valtausalueet
-  Tilan_raja

TEM

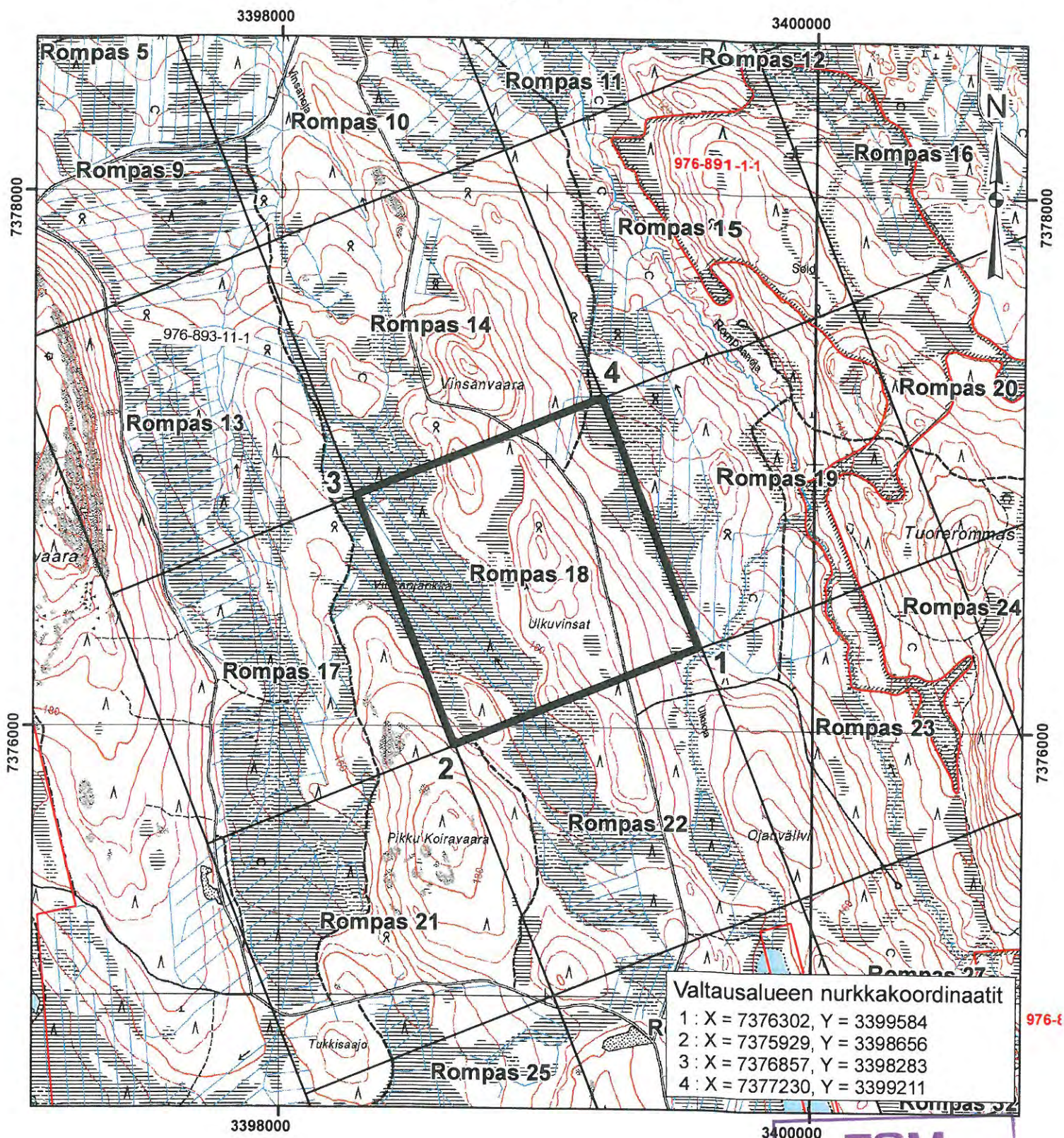
15. 10. 2009


AREVA

AREVA Resources Finland Oy

08.10.2009

Rompas 18






Rompas 18

Pinta-ala : 100 ha

Liite 2 valtaushakemukseen

Rompas (1 - 46)

15.10.2009

-  Valtausalue
-  Muut_valtausalueet
-  Tilan_raja

0 0,5 1 Kilometri

1 : 20 000

Karttaprojektio : KKJ3

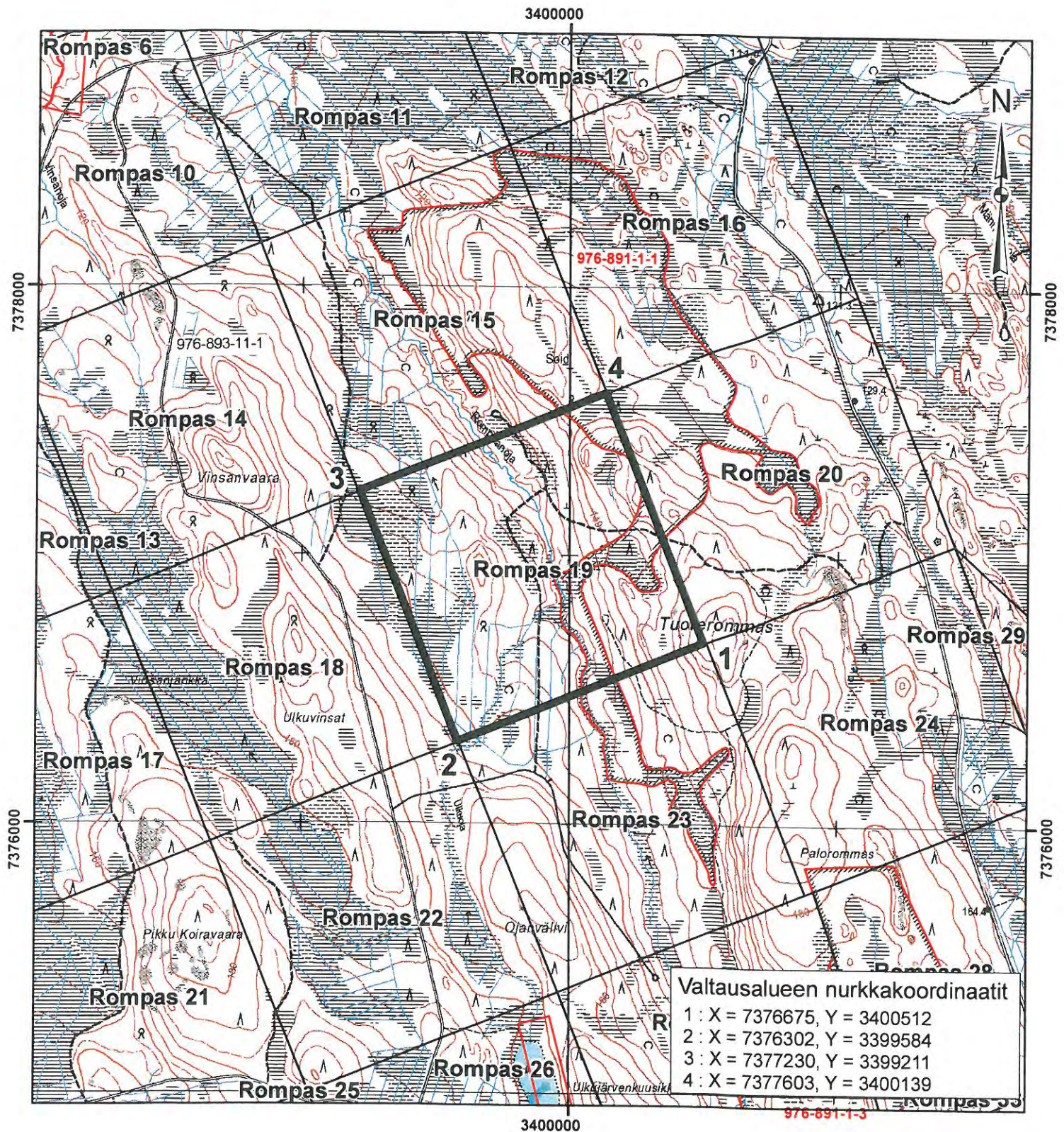
TEM
15. 10. 2009


AREVA

AREVA Resources Finland Oy

08.10.2009

Rompas 19



Rompas 19

Pinta-ala : 100 ha

Liite 2 valtaushakemukseen




Rompas (1 - 46)

15.10.2009

0 0,5 1 Kilometri

1 : 20 000

Karttaprojektio : KKJ3

-  Valtausalue
-  Muut_valtausalueet
-  Tilan_raja

TEM

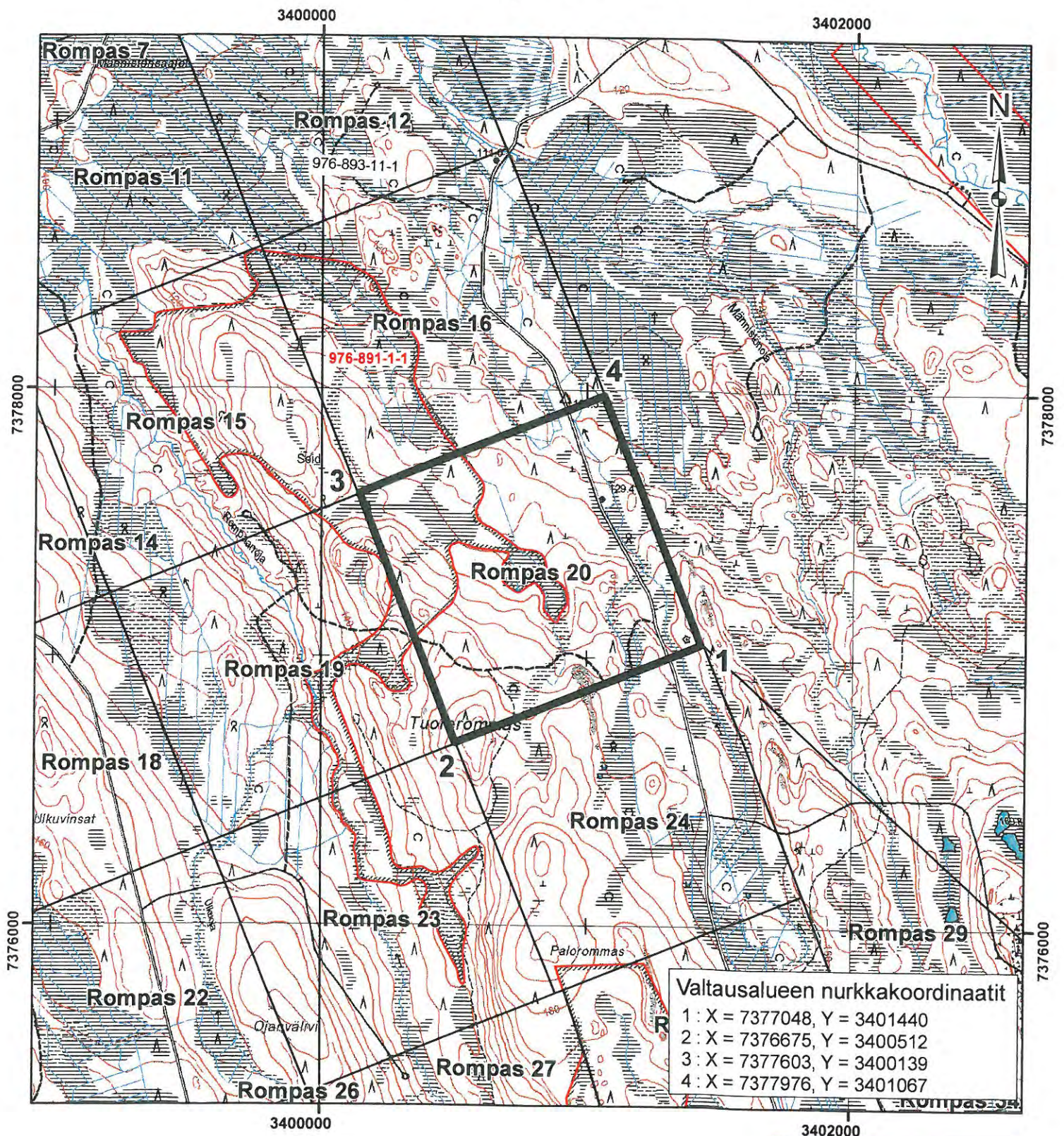
15. 10. 2009


AREVA

AREVA Resources Finland Oy

08.10.2009

Rompas 20



Rompas 20

Pinta-ala : 100 ha

Liite 2 valtaushakemukseen




Rompas (1 - 46)

15.10.2009

0 0,5 1 Kilometri

1 : 20 000

Karttaprojektio : KKJ3

-  Valtausalue
-  Muut_valtausalueet
-  Tilan_raja

TEM

15. 10. 2009

AREVA

AREVA Resources Finland Oy

08.10.2009